



HP high pressure

Datasheet

@2021 v.1.0



› Description

KingAir® separators are designed exclusively to remove solid impurities, water, aerosols, hydrocarbons, odors from the compressed air system and non-aggressive technical gases such as argon, nitrogen and mixtures thereof. It must not be used for cleaning liquids and aggressive gases such as acetylene.

› Applications

Automotive, chemical and petrochemical industries, plastics, electronics, food and beverages, painting, etc.

› Installation:

Separators are designed to protect terminal equipment. Placing in front of equipment with compressed air consumption is best. The device can also be used to clean the entire backbone. Behind the condensation air dryer, it creates a set of full equipment to drain water, oil, solids and water vapor. It guarantees the efficiency of the device according to the parameters of the manufacturer of condensing dryers. **For safety reasons, the ball valve must always be installed under the separator, even if the device is equipped with an automatic trap. In case of installation without ball valve, the device is considered incomplete and must not be used.**

› Maintenance:

The device is maintenance-free. In the event of a problem, contact CMP Trade Service. Disposed condensate must be disposed of in accordance with the Waste Material Directive. The condensate must not be drained freely into the public sewer or the surrounding environment.

› Technical specification and a certification:

Pressure drop: max. 0.38 bar (at 7 bar (102 psi) reference and 20 ° C)

Water removal: 99.9999%

Filtration of impurities: 0.2 µm (90%); 1 µm (100%)

Working pressure: 1 to 70 bar

Operating temperature: 1 ° C to 55 ° C

Material: aluminum, AISI 304 stainless steel, ABS, inner material: ABS


Separation: water, impurities, oil, bacteriaOdvod kondenzátu: manuální (kulový kohout do 70 bar)

ISO 12500-3 IUTA (particels):

2,0 µm 100%

1,0 µm 99%

0,2 µm 90%

Test parameter:									
Inlet pressure		7 bar (e) [8 bar (a)]							
Air flow		48 Nm³/h = 100 % nominal flow rate							
Flow direction		from inside to outside							
Test aerosol		DEHS							
Particle size range		(0.19 – 2.74) µm							
Aerosol Spectrometer		PCS 2100 (Palas GmbH)							
Test results:									
Particle-size range [µm]	lower	0.19	0.24	0.36	0.52	0.81	1.15	1.78	
	upper	0.24	0.36	0.52	0.81	1.15	1.78	2.74	
Average efficiency² [%]		90.11	91.51	93.71	96.45	99	99.81	100	

ISO 12500-4 IUTA (water):

99,9999% in range 1-16 bar

Test parameters						
Inlet pressure		7 bar (e) [8 bar (a)]				
Air flow for testing		25%, 50%, 75%, 100%, 125% of rated flow (48 Nm³/h)				
Injected water per L/s air flow		2 ml/min				
Test results		25%	50%	75%	100%	125%
Pressure drop [mbar] at each flow rate		22	83	184	334	520
Water-removal efficiency (%)		>99.9999%	>99.9999%	>99.9999%	>99.9999%	>99.999%

ISO 8573-2 SGS (oil aerosol):

0,01 mg/m³ >91% (* SGS laboratory detection limit)

Sampling Point	Test Results	Detected Limit	Unit
01 Before filter	0.113	0.0100	mg/m ³
02 After filter	N.D.	0.0100	mg/m ³

Total HydroCarbon(THC) Removal Efficiency

Test Item	Removal Efficiency (%)
Total Aerosol oil	>91



Note: 1.The report will be in vain if it is used separately.

2."N.D."non-detected means the test results is lower than detection limit value.

The combination of AISI316 stainless steel separator material and the PERMA-CEMET 901.902 epoxy adhesive used is suitable for contact with foodstuffs according to 90/128 / EEC and Directive 97/48 / EEC (amendment 90/128 / EEC) and 2005/79 / EC .

ATEX II 2G II C T6 Gb: file 15FILE0037



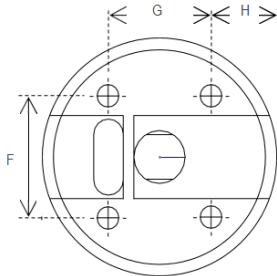
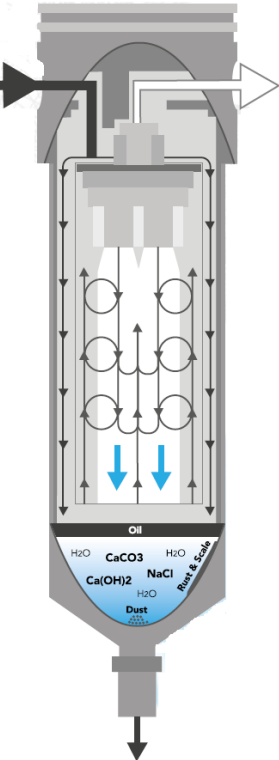
Staphylococcus aureus test: 99.998%



Označení Product code	Materialové provedení Product material	Nominální průtok při 7 bar Referenced flowrate at 7 bar		Vstup / Výstup Inlet/Outlet	Odtok výstup Drain	Rozměr výrobku Product dimension			Váha Weight
		[L/min]	[m3/hod]	BSPT	BSPT	Ø [mm] tělo body	Ø [mm] hlava head	[mm] * délka length	[kg]
KA300HP	nerez a hliník aluminium & stainless steel	850	51	3/4"	1/2"	59	67	280	1,16
KA600HP	nerez a hliník aluminium & stainless steel	1700	102	3/4"	1/2"	59	67	315	1,22
KA900HP	nerez a hliník aluminium & stainless steel	2550	153	3/4"	1/2"	59	67	355	1,28

The flow rates indicated are 7 bar (102 psi) reference pressure and 20 ° C.

* Length with ball valve installed, manual condensate drain. Included.



Type	Connection dimensions			
	F	G	H	screw 4 pcs
KA300HP	35	30	19	M6
KA600HP	35	30	19	M6
KA900HP	35	30	19	M6

Classification under Pressure Equipment Directive (PED) 2014/68 / EU for Group 2 fluids:

PED
PRESSURE EQUIPMENT

Product code Označení	Volume Objem	Category Kategorie	
	[L]	[16 bar]	[70 bar]
KA300HP	0,76	SEP	SEP
KA600HP	0,88	SEP	SEP
KA900HP	0,99	SEP	SEP



www.cmptrade.cz



Pro více informací nás prosím kontaktujte info@cmptrade.cz